



CUSTOM ENGINEERED SYSTEMS

**GEA FES, Inc.
engineered packaged
systems meet the
demands, process
requirements and
refrigeration needs
of heavy-duty
specifications
and applications**



GEA FES, Inc. applies decades of industrial refrigeration experience in order to design and fabricate rugged, efficient and reliable custom engineered packaged systems for the chemical, petrochemical, pharmaceutical, oil refining, natural gas processing, industrial gases, liquefied gas storage and related markets.

Count on us... **No matter how tough the spec**

Design Flexibility

GEA FES, Inc. products, manufacturing processes, capabilities and engineering ability are versatile enough to meet nearly any specification. You are never locked into off-the-shelf components or catalog designs. GEA FES, Inc. can evaluate your process, provide engineering assistance in selecting the proper, most cost-effective equipment, then custom design and build a packaged system to meet your exact requirements, codes and specifications.

Compressors

Primarily heavy-duty positive displacement, oil injected screw compressors, characterized by infinite capacity control, smooth rotary motions, high efficiency and reliable operation, in ranges from 70 to 7400 cfm at compression ratios up to 20:1. Suction temperatures at low as -110°F.

Reciprocating and multi-stage API centrifugal compressors are also available.



Reliability

Packages are ruggedly constructed and easy to install—all piped, wired and mounted on a structural steel base—ready for process and utility connections. All system components are easily accessible for servicing and adjustments. High efficiency oil separation is guaranteed. Estimated operating time between overhaul periods is a minimum of 20,000 hours.



Refrigerants

Efficient performance can be obtained utilizing any common refrigerant, including R-717, R-22, R-507, R-23, R-134a, R-404A, CO₂, propane, propylene and other hydrocarbons.



Power Sources

A broad choice of compressor drives is available, including electric motor, steam turbine, natural gas engine or diesel engine, ranging from 25 to 6,000 Hp.

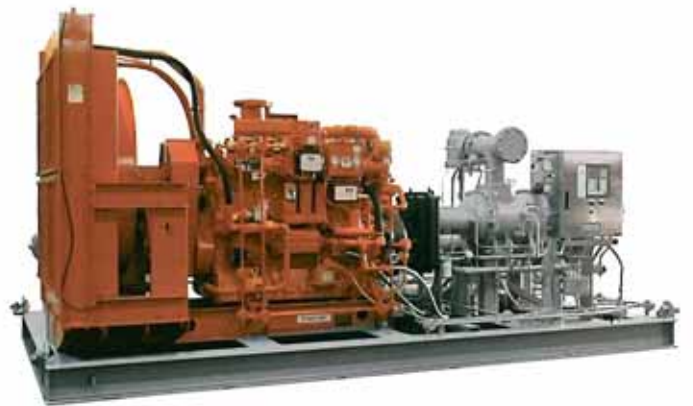
Microprocessor Control

The screw compressor's solid-state microprocessor control panel is enhanced to monitor and control all package components, including operating parameters, first-out annunciations of alarms and shut-downs, system interlocks, vibration sensors and external input/outputs. The control panel is capable of communicating with other plant control panels, computers, terminals and PLC's.



Environment

Packages are available for outdoor operation in hazardous areas per NEC Division 1 or 2 or IEC Zone 1 or 2.





**Worldwide
Supplier of
Engineered
Systems and
Components**

Among Our Customers

Abbott Laboratories	Glaxo Inc.
ADM	
Air Liquide	Honda Motors
Air Products & Chemicals	Honeywell
American Cynamid Co.	INEOS
Arkansas Eastman Co.	Jacobs Sverdrup
Atofina	Merck & Co.
BASF	Olin Chemical
Boehringer Ingram Chemical	Petroquimica de Venezuela S.A.
B.P. Solvay	Pfizer Inc.
C.F. Industries	PPG Industries
Chevron Chemical Co.	PPML
Ciba Geigy	Procter & Gamble
Chrysler Corp.	SABIC
CNOOC, P.R. China	SECCO
CNPC, P.R. China	Shell Oil Co.
Dow Chemical USA	Sinopec, P.R. China
Dow Corning Corp.	Texas Petro Chemicals
E.I. DuPont	Tractebel Gas Eng
Formosa Plastics Corp.	UGDC Egypt
Ford Motor Co.	Wyeth
Ganes Chemical	
General Electric	
General Motors	

API



iiar



GEA FES, Inc.
3475 Board Road, York, Pennsylvania 17406
Ph: 717-767-6411 | Fax: 717-764-3627
Email: sales.fes@geagroup.com | www.fessystems.com

Form No. CES-0109

GEA