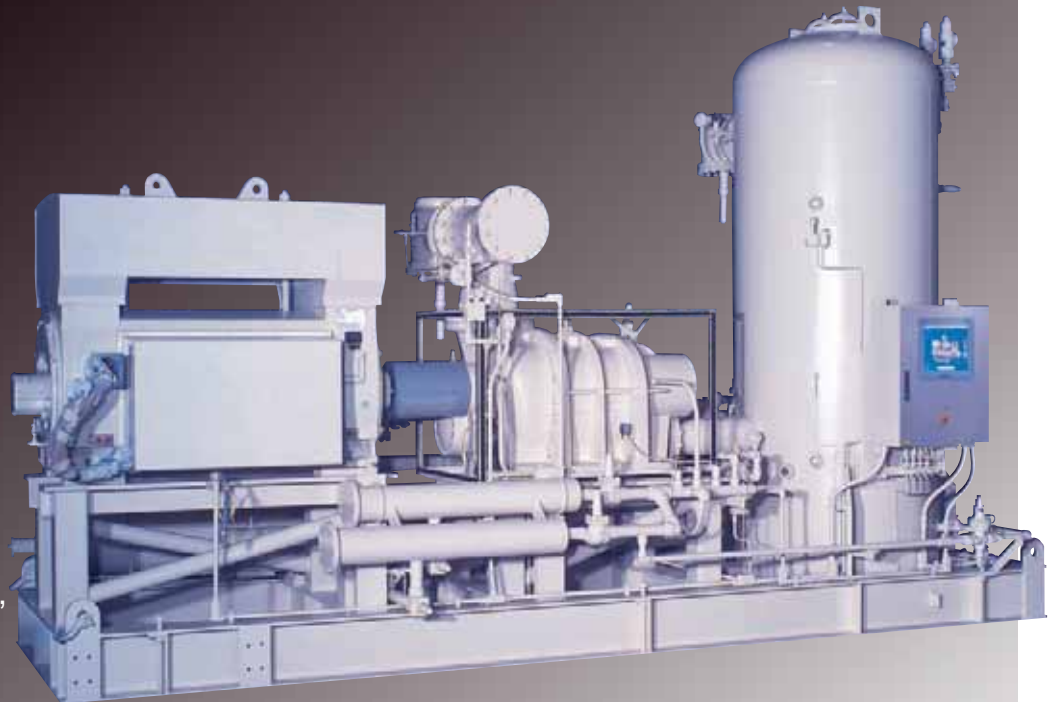


GL Series Screw Compressor Package

1025GL
1210GL
1435GL
1770GL
2110GL

Designed for high stage operation, utilizing various refrigerants including R-717, R-22, R-507, R-134A



Compressor Features:

- Proprietary line-generated rotor profile and optimized rotor dimensions for improved volumetric efficiency and lower power consumption.
- 5:6 male to female lobe ratio for improved bearing load distribution, lower noise generation, and better bhp/ton performance.
- Patented flow-optimized suction inlet improves volumetric efficiency and reduces noise.
- Service-friendly design combines long-life sleeve bearings with easy access thrust bearings that can be replaced without removing the compressor.
- Double-acting hydraulic capacity control, infinitely adjustable from 10% to 100%.
- Unique Hermetic Differential Transformer (HDT) transmits slide valve position without wear or friction and requires no external seal.
- Three-way thermostatic oil temperature control valve standard with oil cooler options.
- Patented low pressure drop suction strainer.
- High performance, all steel, multiple disc coupling with factory assembled center member for quick installation and removal.
- Unique keyless frictional coupling hub on the compressor end provides an easily adjustable and releasable mechanical shrink fit. This feature provides all the benefits of a shrink fit, but without the problems.
- Uses industry standard size motors with oversized junction box for easier connection.
- Advanced Micro III microprocessor control panel is standard with options for refrigeration system control.
- New advanced GForce™ microprocessor control panel is a standard option.

Package Features:

- Multi-stage oil separator design guarantees low oil loss.
- Partial-flow, full-time oil pump.

Product Drawings:

- Contact your nearest FES Systems sales representative or go to www.fessystems.com, click on "FES EXTRA" and register for "Special Access" to receive G Series general arrangement (GA) drawings.

GL Series Compressor Packages

1025GL, 1210GL, 1435GL, 1770GL, 2110GL

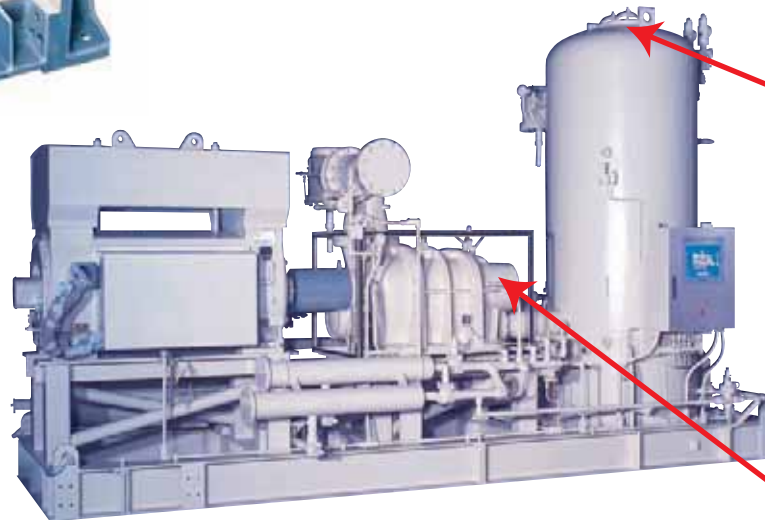
Sleeve Bearings:

- Infinite life
- Inherently quiet



Hermetic Slide Valve indicator:

- No leaks
- Fewer repairs
- 4-20A Output



New Super Depth Coalescers for:

- Reduced oil carryover
- Less pressure drop
- Deeper groove eliminates O-ring crushing

Standard IntelliSOC Liquid Injection Oil Cooling:

- Reduced package and field piping
- Precise discharge temperature control
- Low discharge pressure operation
- Lower operating costs



With field replaceable thrust bearings there is no seal removal; no compressor removal. No other compressor provides this serviceability.

Optional - C.I.S. Compact integrated Starter

- Factory Mounted and pre-wired
- Simplified field control and power wiring

GEA FES Systems Inc.

Refrigeration Division

A company of GEA Group

3475 Board Road • York, PA 17406 • Tel. 717-767-6411 • Fax 717-764-3627 www.fessystems.com



74 300 8611

Form No.
GLV02-08
Supersedes
GLV12-01